



From designing buildings to researching deserts

Adriana Zúñiga-Terán, Ph.D.

SWAN International Conference
Water-Energy-Food Nexus
February 17, 2016

Funded by



Led by



In partnership with



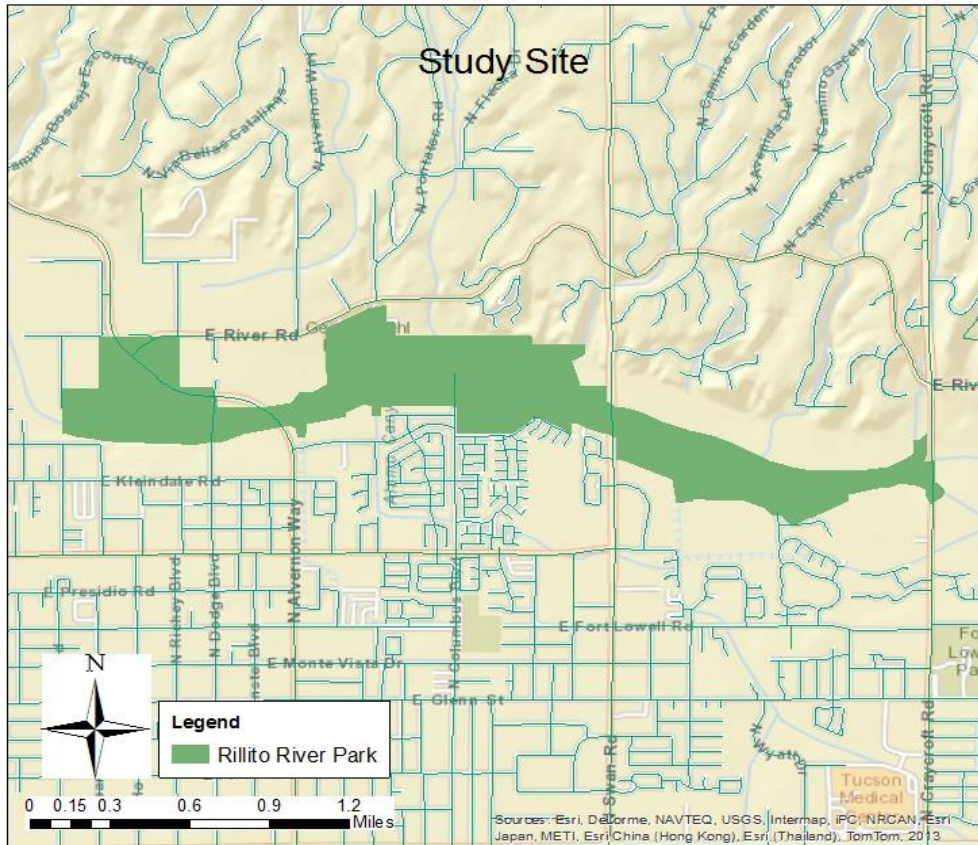
The built environment and physical activity



The nine categories together compose a walkable neighborhood

Walkability Framework = Walkability Model

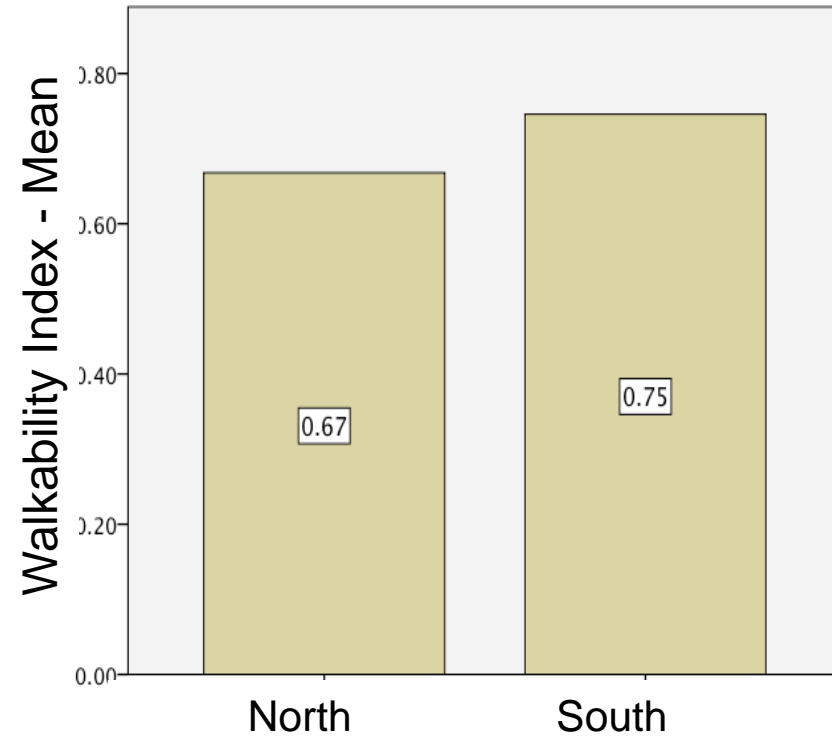
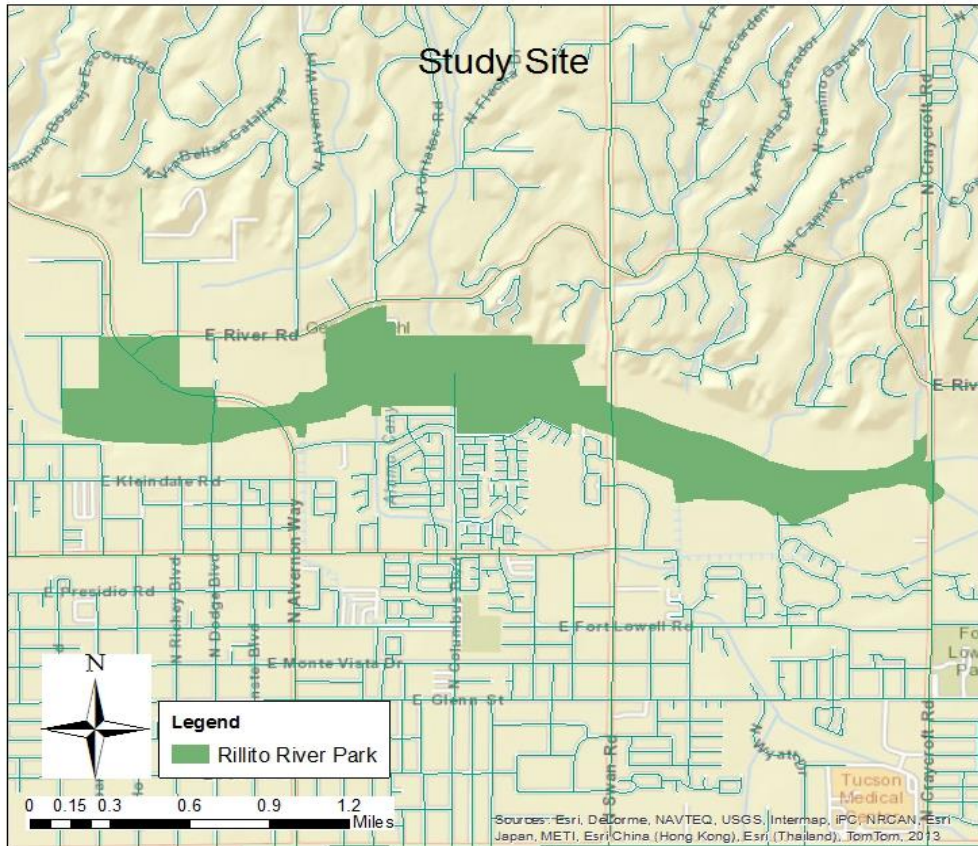
The use of greenspace and wellbeing



North side =
low walkability

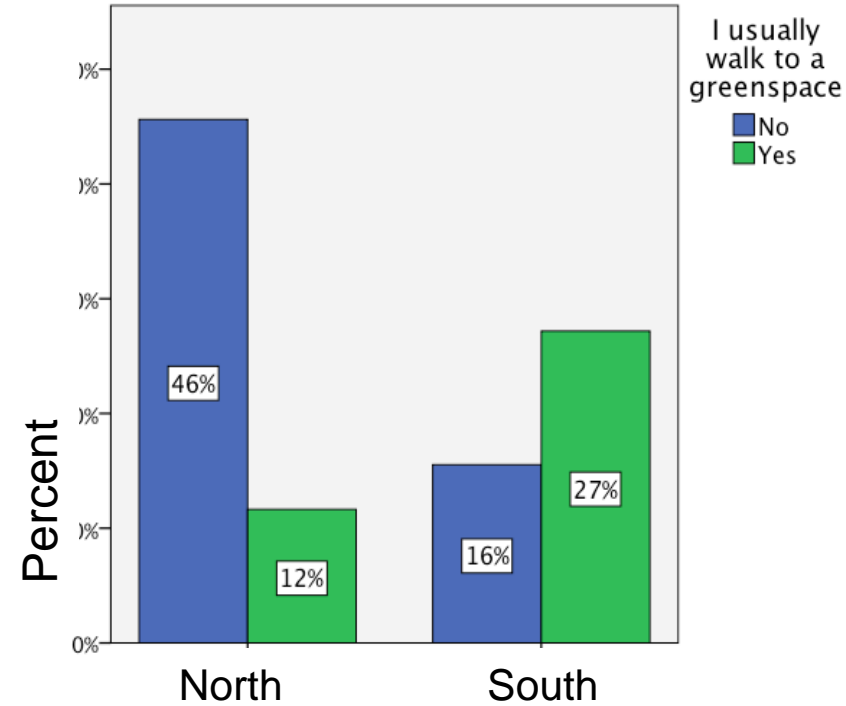
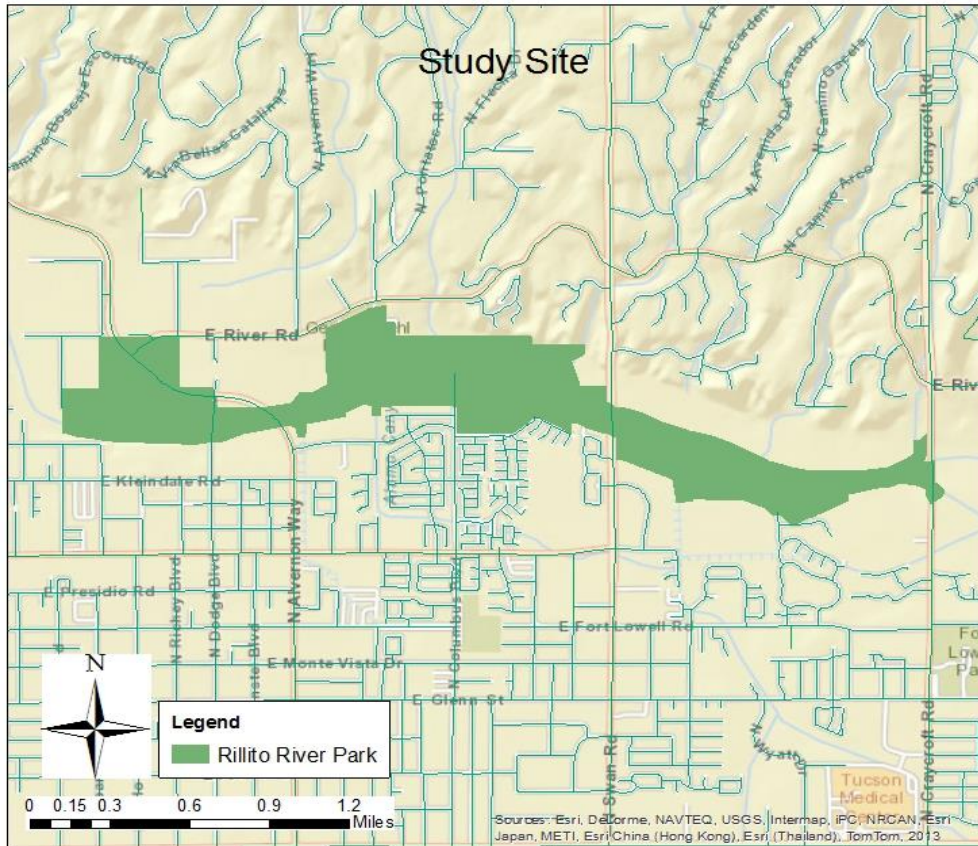
South side =
high walkability

The use of greenspace and wellbeing



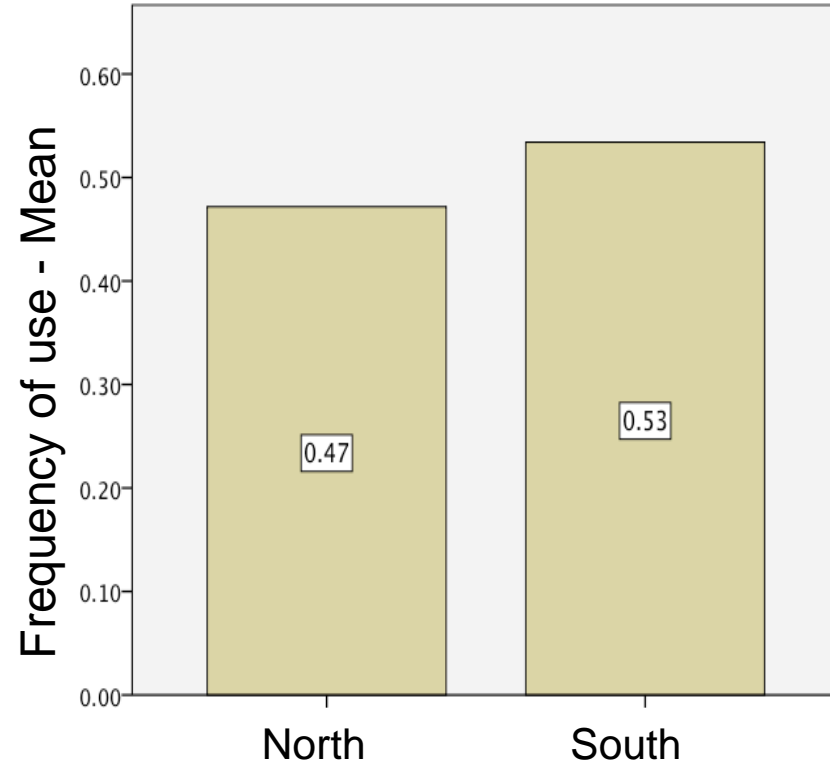
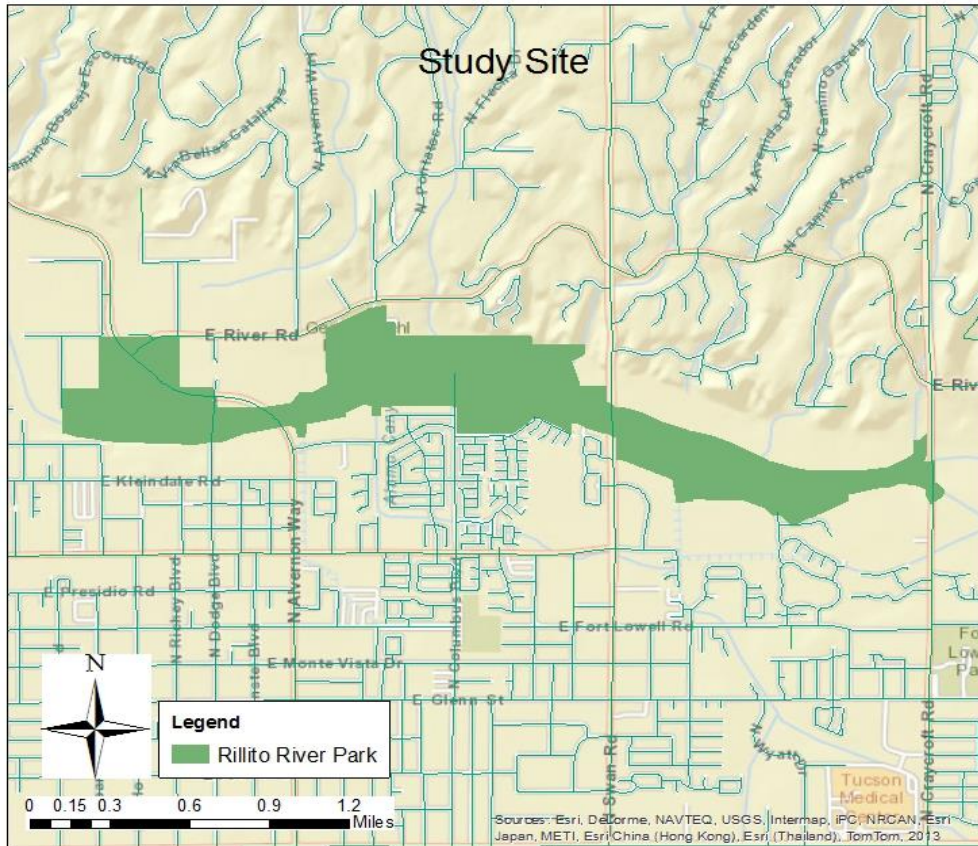
N=103

The use of greenspace and wellbeing



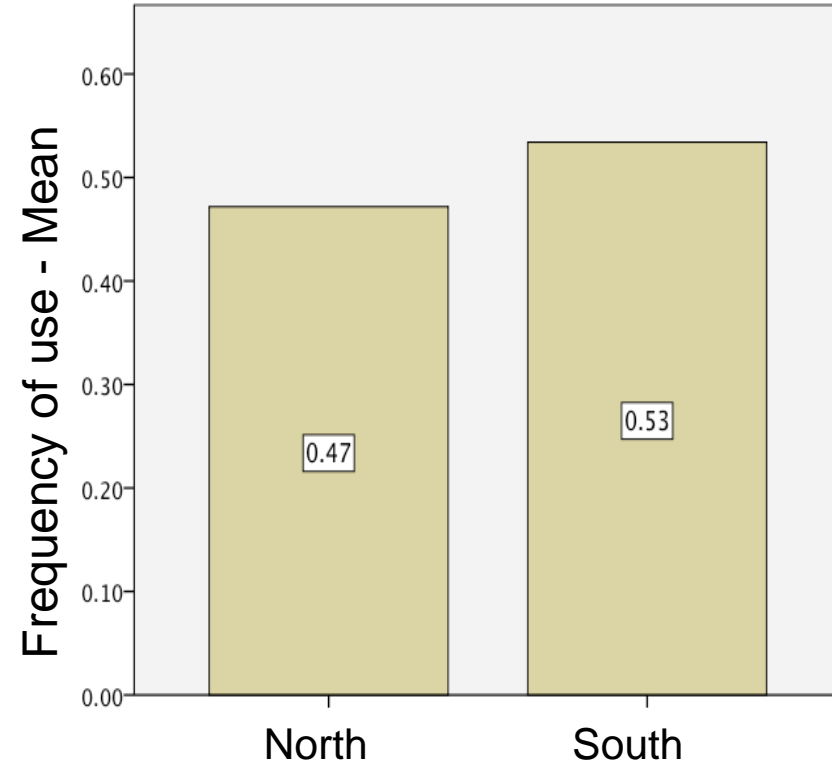
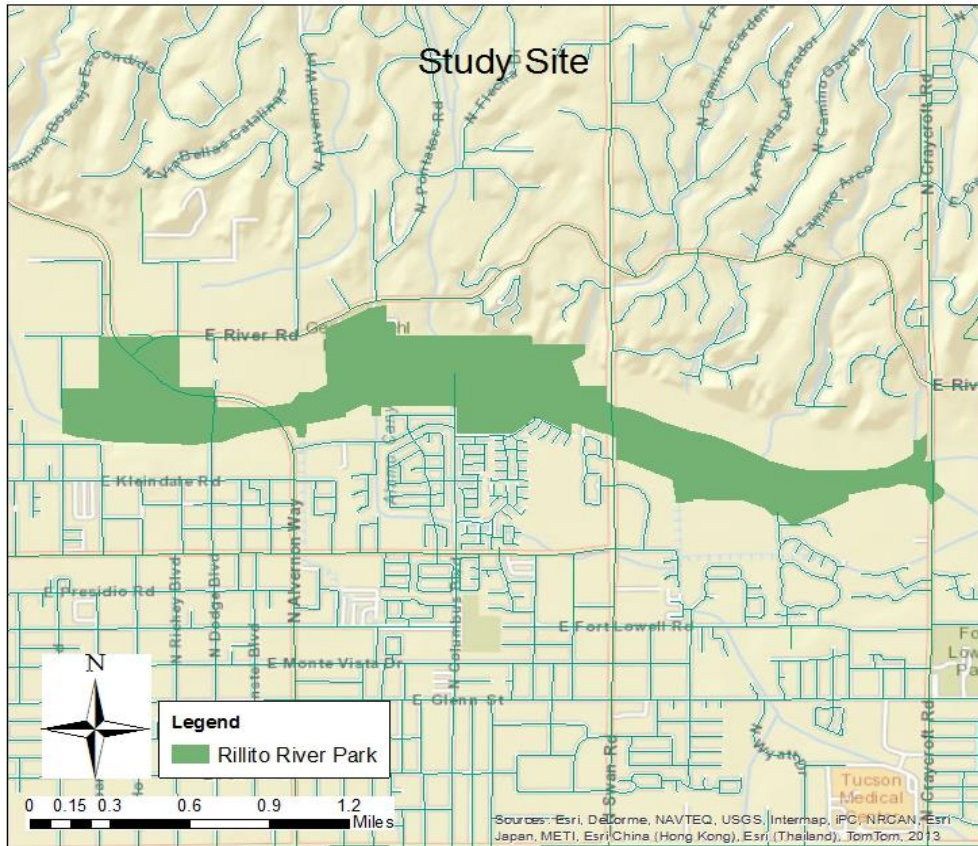
N=103

The use of greenspace and wellbeing



N=103

The use of greenspace and wellbeing



Walking to greenspace was significantly correlated to:

- physical health
- social health

SYNERGIES



From designing buildings to researching deserts

Dr. Adriana Zúñiga-Terán

SWAN International Conference
Water-Energy-Food Nexus
February 17, 2016

Funded by



Led by



In partnership with





www.watersecuritynetwork.org
www.twitter.com/water_network

The Project is funded by **Lloyd's Register Foundation**, a charitable foundation helping to protect life and property by supporting engineering-related education, public engagement and the application of research.

For more information, see: www.lrfoundation.org.uk

This project is also funded by the Inter-American Institute for Global Change Research (IAI).

